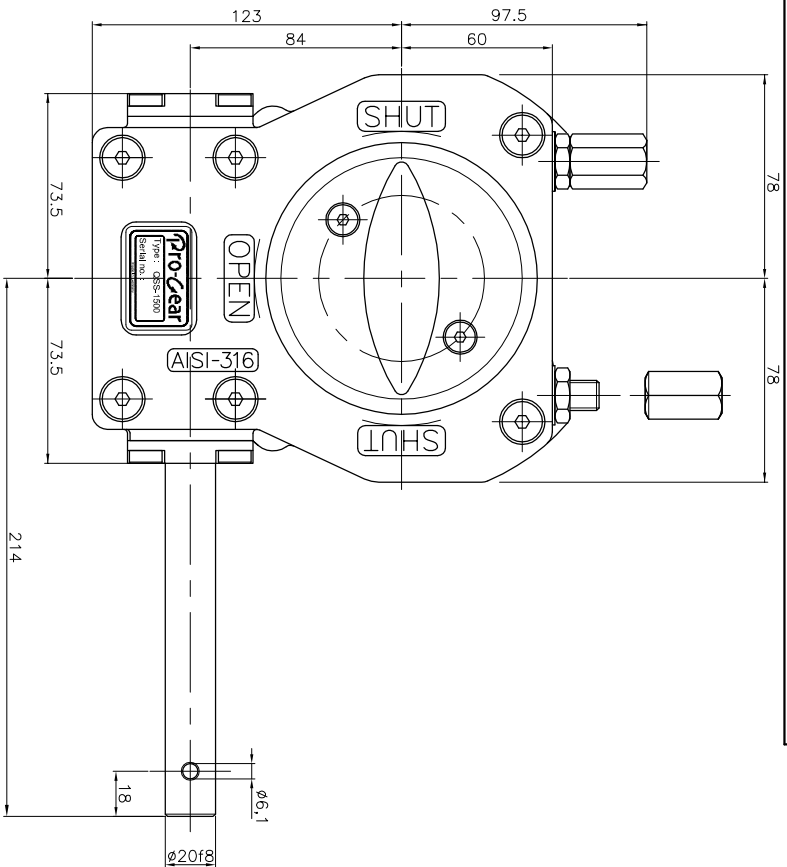


GEARBOX TYPE: QSS-1500-S

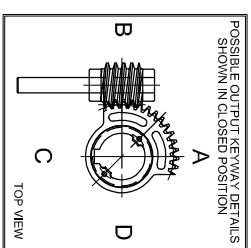
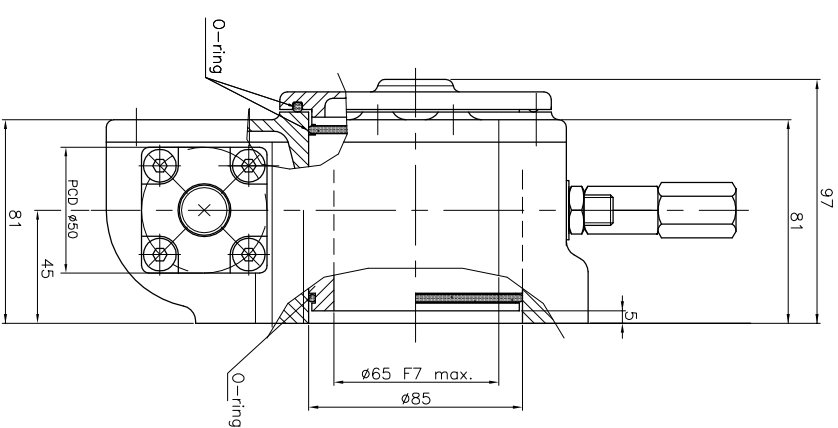


TECHNICAL DATA

NAME	: QSS-1500 S
Trowel	: 90° ±5° at both ends
RATIO	: 42 : 1 (quarter turn)
TURNS TO CLOSE	: 10.5
APPROX. WEIGHT	: 10.5 kg. (23.15lb.) excl. bore and handwheel
MAX. INPUT TORQUE	: 122.95Nm (90.68 lbf.ft.)
MAX. OUTPUT TORQUE	: 1500 Nm (1106.34 lbf. ft.)
MECH. ADV.	: 12.2% (+/- 10%) (Values measured by fully loaded gearbox)

MOUNTING DETAILS

BOLT CIRCLE	MIN. : $\phi 102$ [4.01] 4x M10 (F10) MAX. : $\phi 140$ [5.51] 4x M16 (F14)
BORE	MIN. : $\phi 25$ [0.98] (pilot-bore) MAX. : $\phi 65$ [2.55] or $\square 40$ [1.57]



No rights can be obtained from this drawing
Drawing can be changed without notice

Pro-Gear



dimension in MM.

Scale : none

Drawing number :

DC-QSS-1500-S-01

Revision :

02

This document is property of PRO-GEAR GmbH. Neither this or its content may be copied or used in any other way detrimental to the interest of PRO-GEAR, acceptance of this document shall constitute acknowledgement of the foregoing conditions