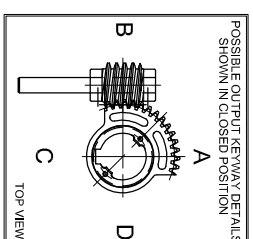
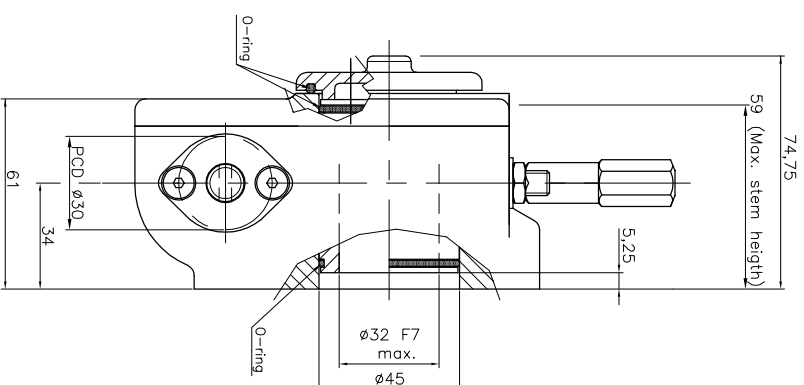
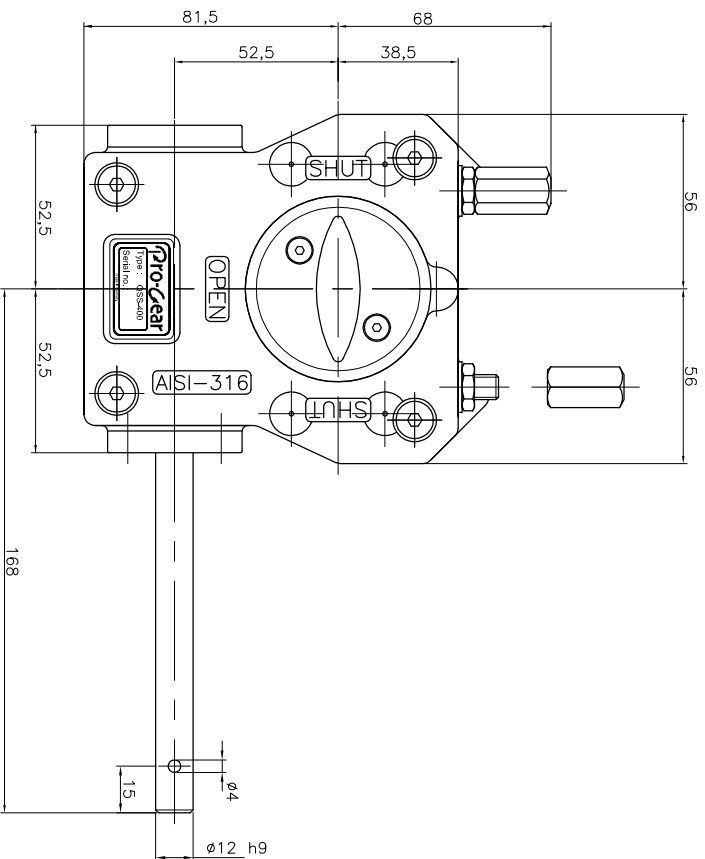


GEARBOX TYPE: QSS-400-S



No rights can be obtained from this drawing
Drawing can be changed without notice

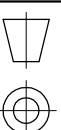
TECHNICAL DATA

NAME	: QSS-400 S
Travel	: 90° ±5° at both ends
RATIO	: 44 : 1 (quarter turn)
TURNS TO CLOSE	: 11
APPROX. WEIGHT	: 3.97 kg. (8.75lb.) excl. bore and handwheel
MAX. INPUT TORQUE	: 31.25Nm (23.05 lbf.ft.)
MAX. OUTPUT TORQUE	: 400 Nm (295.02lbf. ft.)
MECH. ADV.	: 12.8% (+/- 10%) (Values measured by fully loaded gearbox)

MOUNTING DETAILS

BOLT CIRCLE	MIN.	: Ø70 [2.75] 4x M8 (F07)
	MAX.	: Ø102 [4.01] 4x M10 (F10)
BORE	MIN.	: Ø10.5 (pilot-bore)
	MAX.	: Ø32 [1.26] or [1.22 [0.79]

Pro-Gear



dimension in MM.

Scale : none

Drawing number :

DC-QSS-400-S-01

Revision :

02

This document is property of PRO-GEAR GmbH. Neither this or its content may be copied or used in any other way detrimental to the interest of PRO-GEAR, acceptance of this document shall constitute acknowledgment of the foregoing conditions