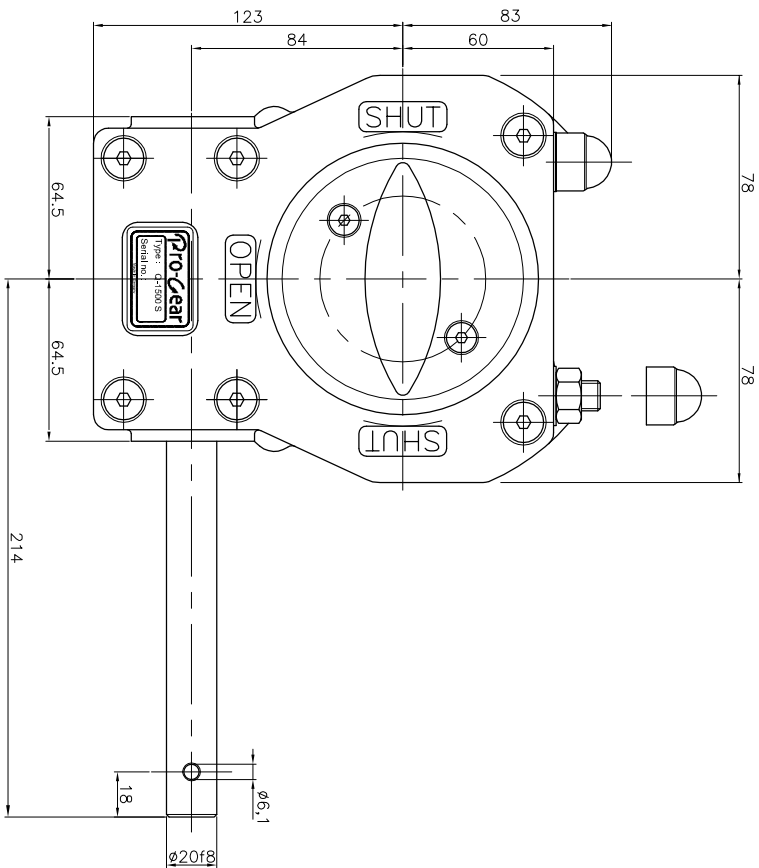


# GEARBOX TYPE: Q 1500-S

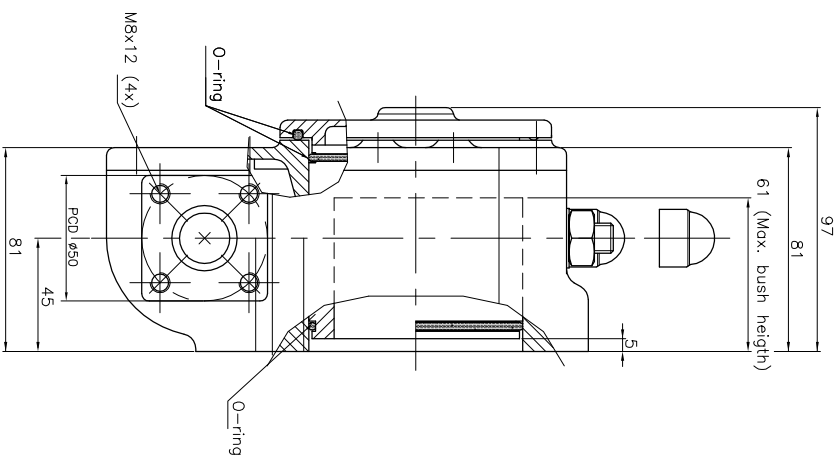


## TECHNICAL DATA

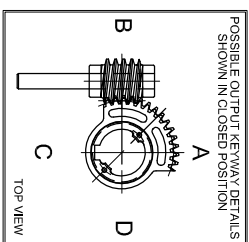
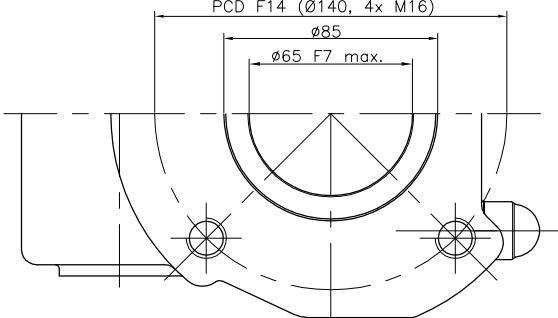
NAME	: 1500 S
Travel	: 90° ±5° at both ends
RATIO	: 42 : 1 (quarter turn)
TURNS TO CLOSE	: 10.5
APPROX. WEIGHT	: 10.5 kg. ( 23.15lb. ) excl. bore and handwheel
MAX. INPUT TORQUE	: 122.95Nm (90.68 lbf.ft.)
MAX. OUTPUT TORQUE	: 1500 Nm (1106.34 lbf. ft.)
MECH. ADV.	: 12.2% (+/- 10%) (Values measured by fully loaded gearbox)

## MOUNTING DETAILS

BOLT CIRCLE	MIN.	: ø102 [4.01] 4x M10 (F10)
	MAX.	: ø140 [5.51] 4x M16 (F14)
BORE	MIN.	: ø____ (pilot-bore) or [____] [____]
	MAX.	: ø65 [2.55] or [40] [1.57]

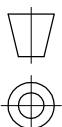


PCD available  
 PCD F10 (ø102, 4x M10)  
 PCD F12 (ø125, 4x M12)  
 PCD F14 (ø140, 4x M16)



No rights can be obtained from this drawing  
 Drawing can be changed without notice

# Pro-Gear



dimension in MM.

Scale : none

Drawing number : DC-I500-S-01

Revision : 05

This document is property of PRO-GEAR GmbH. Neither this or its content may be copied or used in any other way detrimental to the interest of PRO-GEAR, acceptance of this document shall constitute acknowledgement of the foregoing conditions