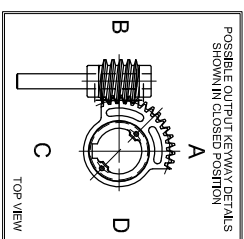
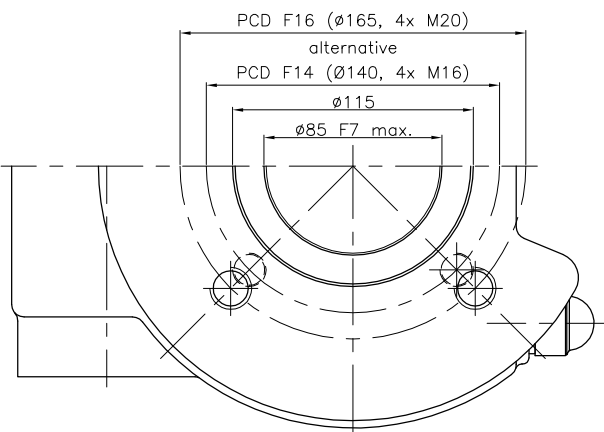
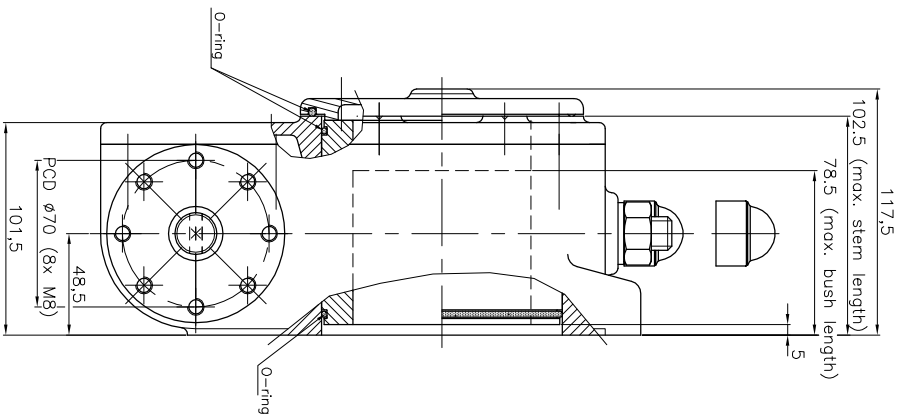
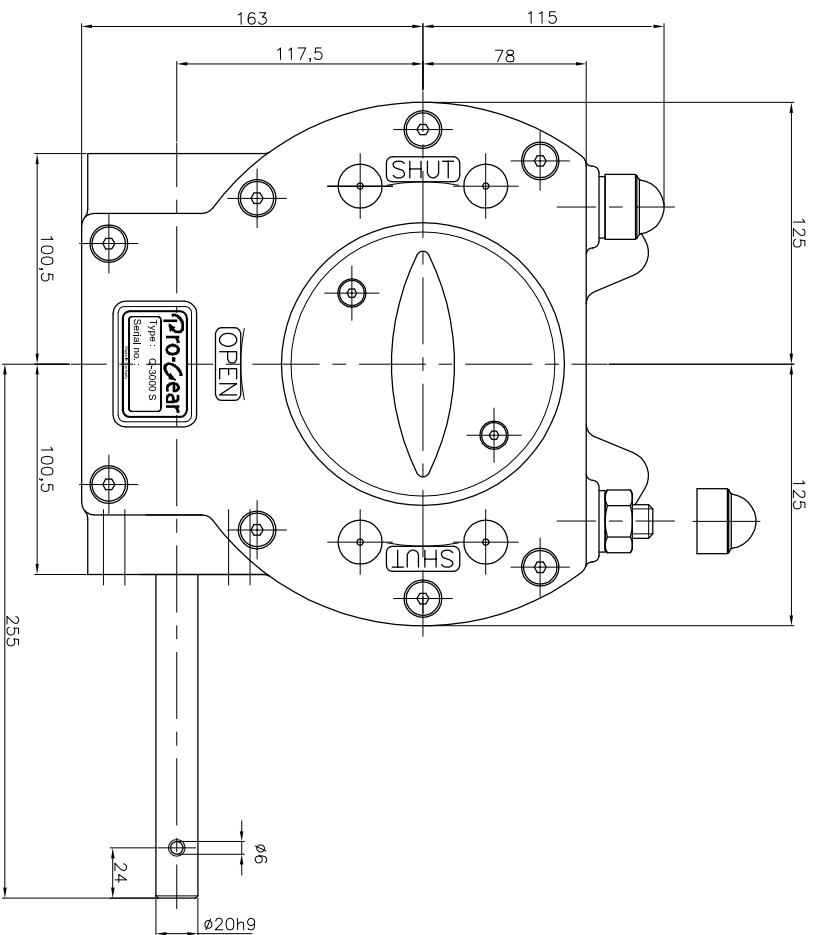


# GEARBOX TYPE: Q 3000-S



No rights can be obtained from this drawing  
Drawing can be changed without notice

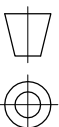
## TECHNICAL DATA

NAME	: Q-3000 S
Travel	: 90° ±5° at both ends
RATIO	: 62 : 1 (quarter turn)
TURNS TO CLOSE	: 15.5
APPROX. WEIGHT	: 22.8 kg (50.26lb.)
	excl. bore and handwheel
MAX. INPUT TORQUE	: 167Nm (123.17lbf.ft.)
MAX. OUTPUT TORQUE	: 3000 Nm (2212.7 lbf.ft.)
MECH. ADV.	: 17.9% (+/- 10%) (values measured by fully loaded gearbox)

## MOUNTING DETAILS

BOLT CIRCLE	MIN. : $\phi 140$ [5.5"] 4x M16 (F14)	MAX. : $\phi 165$ [6.50"] 4x M20 (F16)
BORE	MIN. : --	MAX. : $\phi 85$ [3.35"] or [3.5"] [2.16"]

# Pro-Gear



dimension in MM.

Scale : none

Drawing number : DC-3000-S-01

Revision : 01

This document is property of PRO-GEAR GmbH. Neither this or its content may be copied or used in any other way detrimental to the interest of PRO-GEAR, acceptance of this document shall constitute acknowledgement of the foregoing conditions