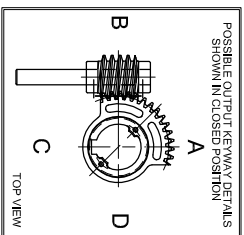
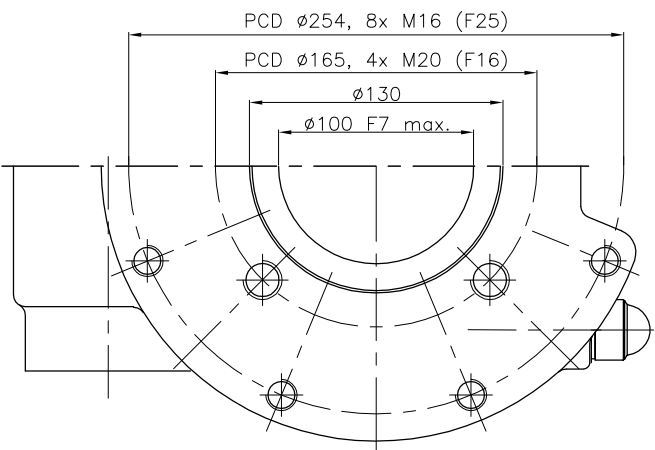
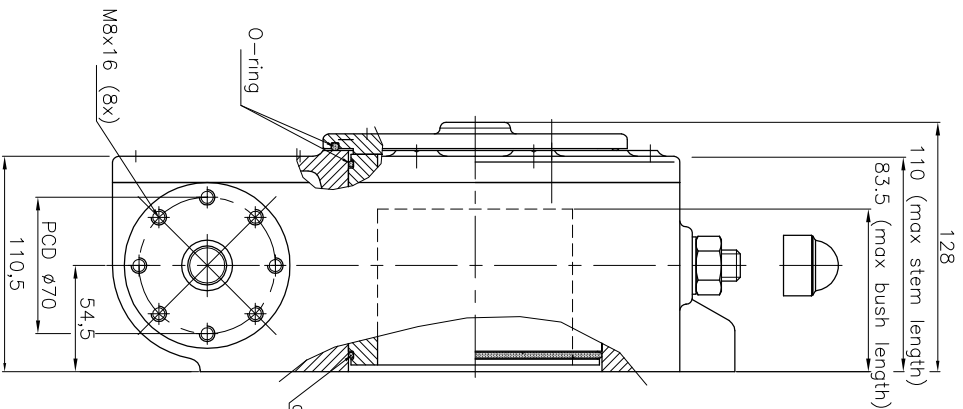
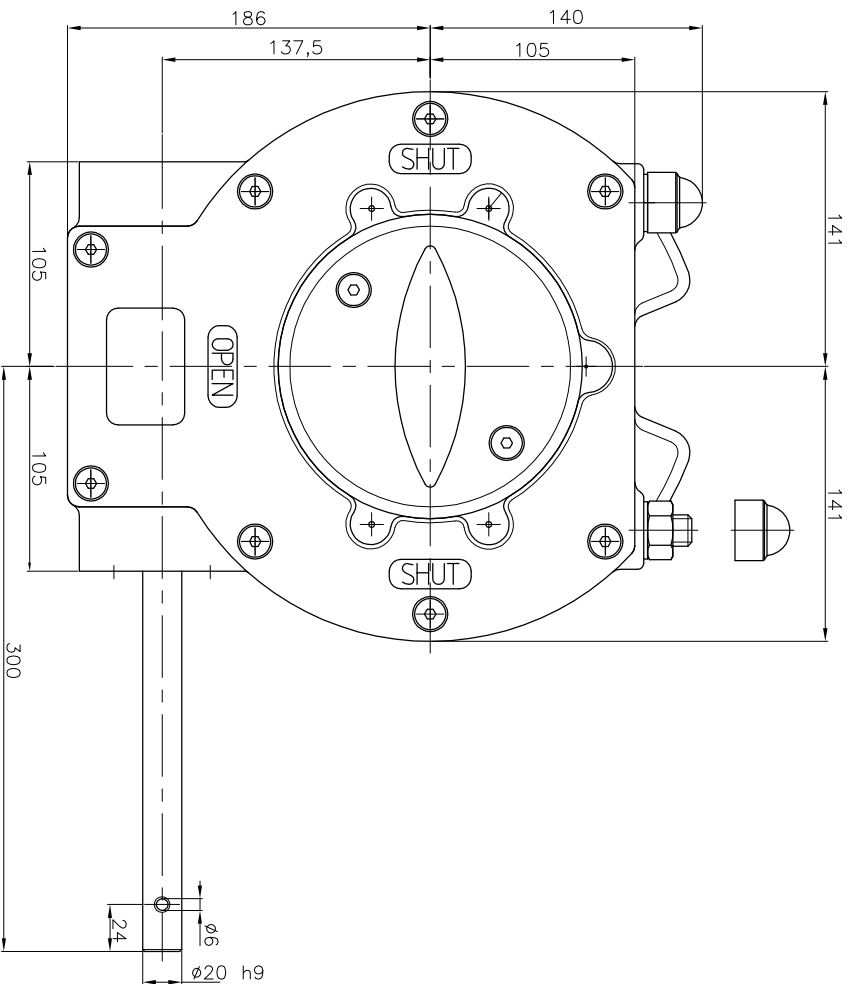


# GEARBOX TYPE: Q 4000-S



No rights can be obtained from this drawing  
Drawing can be changed without notice

## TECHNICAL DATA

NAME	: Q-4000 S
Travel	: 90° ±5° at both ends
RATIO	: 72 : 1 (quarter turn)
TURNS TO CLOSE	: 18
APPROX. WEIGHT	: 31.5 kg. (69.45lb.) excl. bore and handwheel
MAX. INPUT TORQUE	: 185Nm (135.5 lbf.ft.)
MAX. OUTPUT TORQUE	: 4000 Nm (2950.3 lbf.ft.)
MECH. ADV.	: 21.5% (+/- 10%) (values measured by fully loaded gearbox)

## MOUNTING DETAILS

BOLT CIRCLE	MIN. : $\phi 165$ [6.50] 4x M20 (F16)	MAX. : $\phi 254$ [10.0] 8x M16 (F25)
BORE	MIN. : --	MAX. : $\phi 100$ [3.94"] or [165 [2.56"]]

# Pro-Gear



dimension in MM.

Scale : none

Drawing number : DC-4000-S-01

Revision : 05

This document is property of PRO-GEAR GmbH. Neither this or its content may be copied or used in any other way detrimental to the interest of PRO-GEAR, acceptance of this document shall constitute acknowledgement of the foregoing conditions