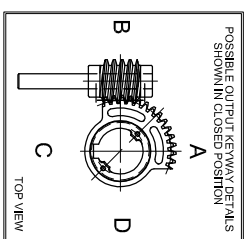
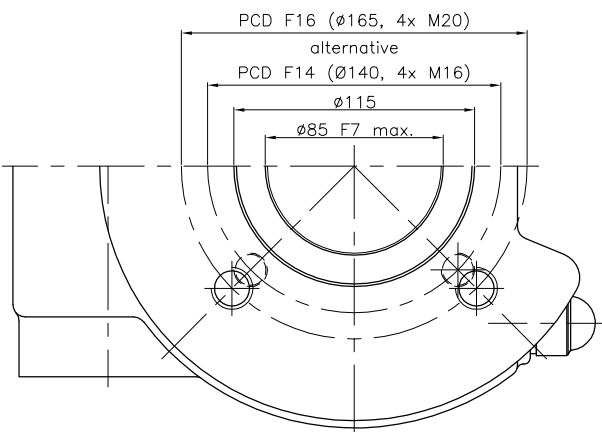
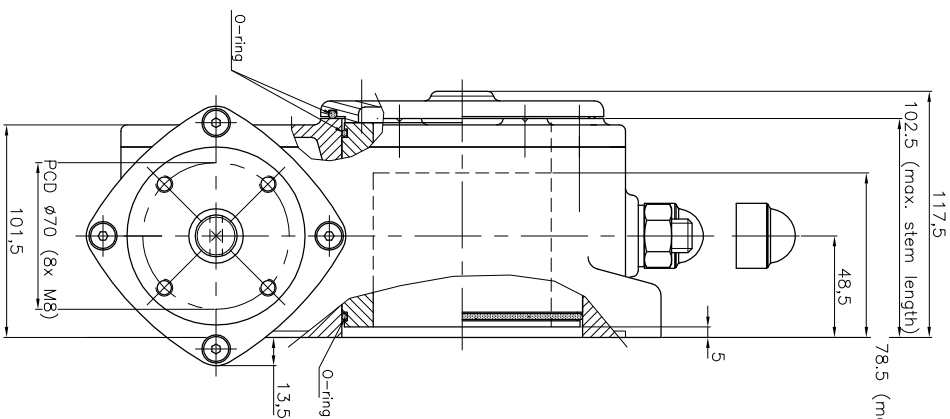
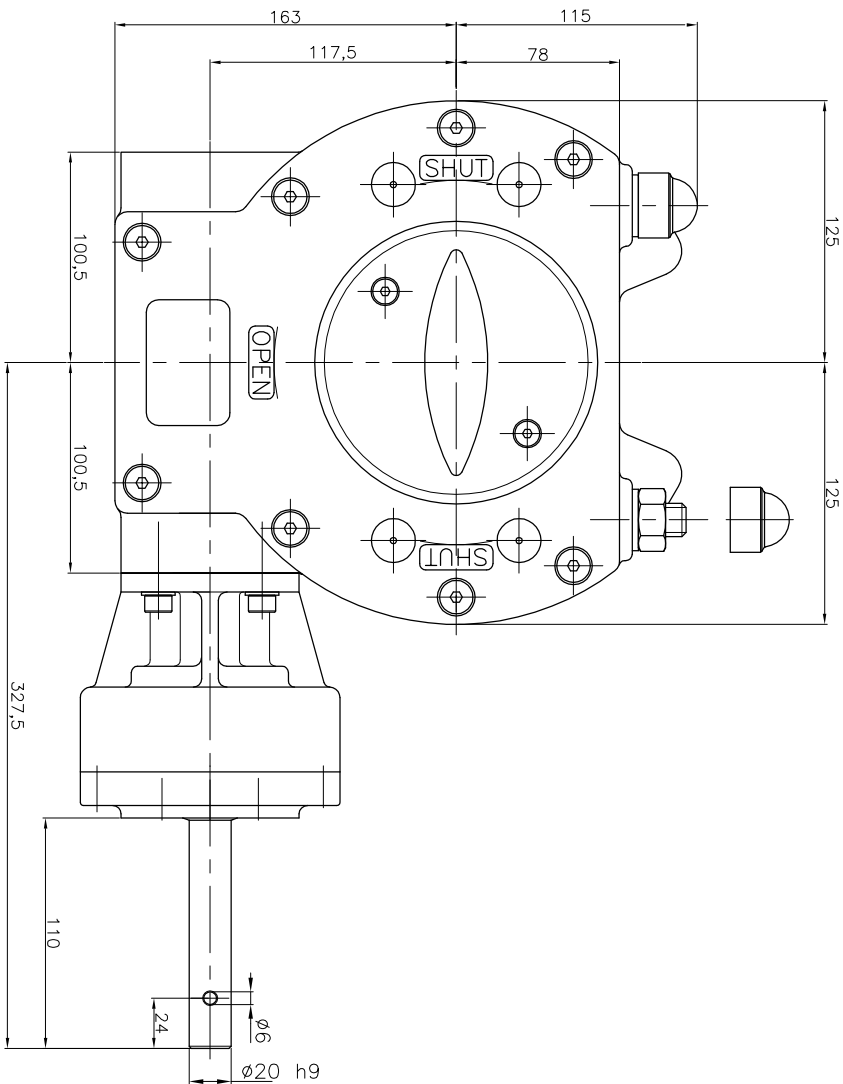


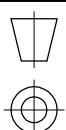
GEARBOX TYPE: Q 5000-S



No rights can be obtained from this drawing
Drawing can be changed without notice

TECHNICAL DATA	
NAME	: Q-5000 S
Travel	: 90° ±5° at both ends
RATIO	: 230 : 1 (quarter turn)
TURNS TO CLOSE	: 57.5
APPROX. WEIGHT	: 29.3 kg (64.62lb) excl. bore and handwheel
MAX. INPUT TORQUE	: 85Nm (62.69 lbf.ft.)
MAX. OUTPUT TORQUE	: 5000 Nm (3687.8 lbf.ft.)
MECH. ADV.	: 58.8% (+/- 10%) (values measured by fully loaded gearbox)
MOUNTING DETAILS	
BOLT CIRCLE	MIN. : ø140 [5.51] 4x M16 (F14) MAX. : ø165 [6.50] 4x M20 (F16)
BORE	MIN. : -- MAX. : ø85 [3.35"] or [3.55"] [2.16"]

Pro-Gear



dimension in MM.

Scale : none

Drawing number :

DC-5000-S-01

Revision :

00

This document is property of PRO-GEAR GmbH. Neither this or its content may be copied or used in any other way detrimental to the interest of PRO-GEAR, acceptance of this document shall constitute acknowledgement of the foregoing conditions