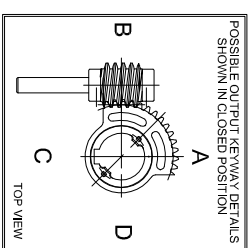
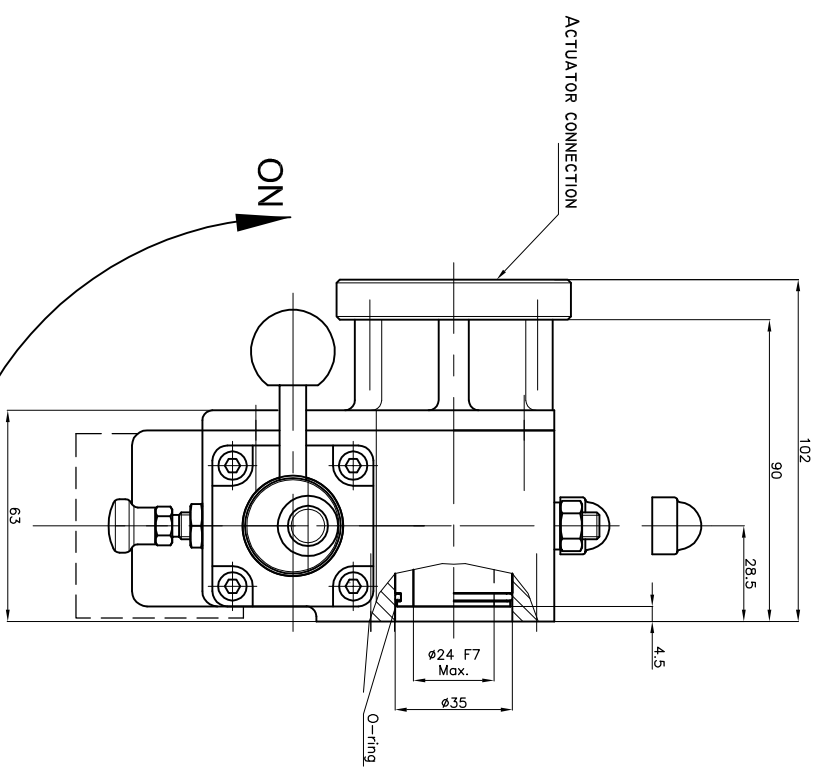
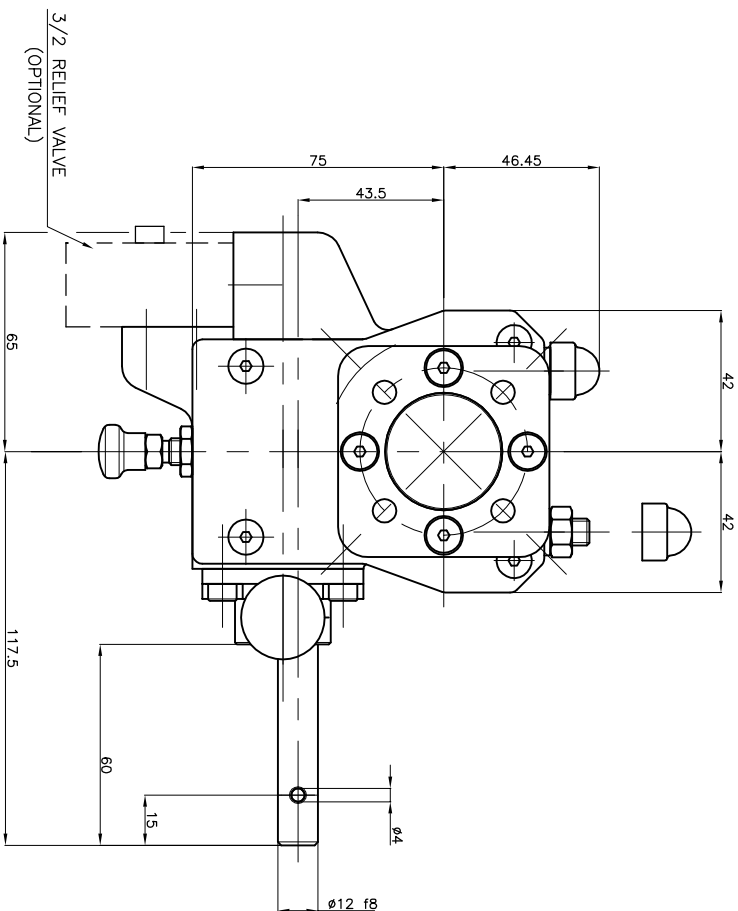


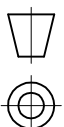
GEARBOX TYPE: 150 MO-D



No rights can be obtained from this drawing
Drawing can be changed without notice

TECHNICAL DATA	
NAME	: 150 MO-D
Travel	: 90° 5° at both ends
RATIO	: 40 : 1 (quarter turn)
TURNS TO CLOSE	: 11
APPROX. WEIGHT	: 3.04 kg. (6.69lb.) excl. bore, coupling and handwheel
MAX. INPUT TORQUE	: 12.60Nm (9.30 lbf.ft.)
MAX. OUTPUT TORQUE	: 150 Nm (110.53lbf. ft.)
MECH. ADV.	: 11.9% (+/- 10%) (Value measured by fully loaded gearbox)
MOUNTING DETAILS	
VALVE CONNECTION	MIN. : $\phi 42$ [1.65] 4x M5 (F04) MAX. : $\phi 70$ [2.76] 4x M8 (F07)
BORE	MIN. : $\phi 8.4$ (pilot-bore) or [8.0] [0.31] MAX. : $\phi 24$ [0.94] or [14] [0.55]
ACTUATOR CONNECTION	MIN. : $\phi 50$ [1.97] 4x $\phi 7$ (F05) MAX. : $\phi 70$ [2.76] 4x $\phi 9$ (F07)
BORE	MIN. : ϕ [] or [] [] MAX. : $\phi 35$ [1.38] or [27] [1.06]

Pro-Gear



dimension in MM.

Scale : none

Drawing number :

DC-150-MO-D-01

Revision :

00

This document is property of PRO-GEAR GmbH. Neither this or its content may be copied or used in any other way detrimental to the interest of PRO-GEAR, acceptance of this document shall constitute acknowledgment of the foregoing conditions