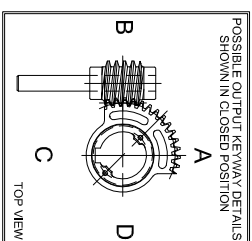
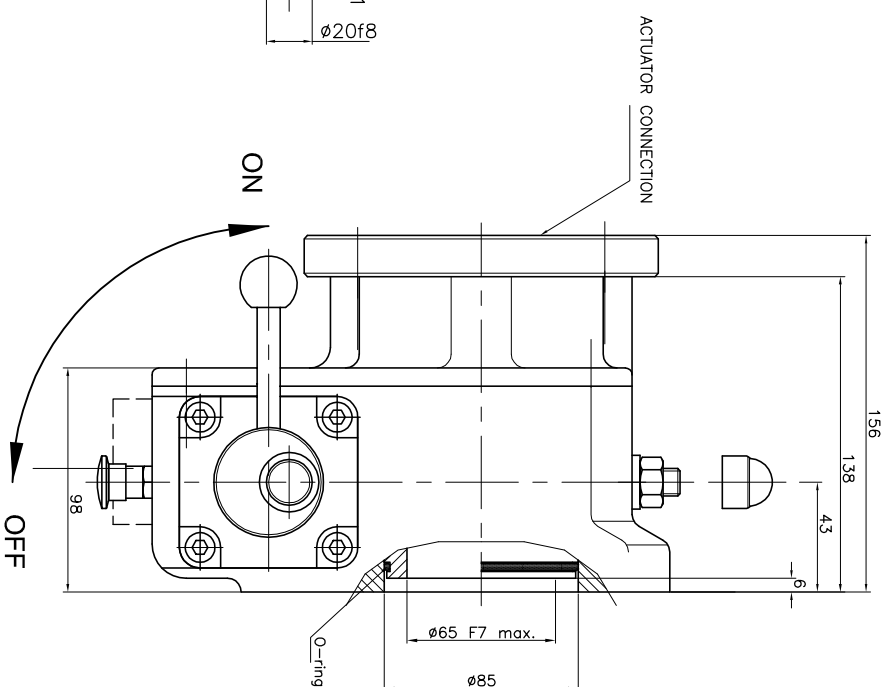
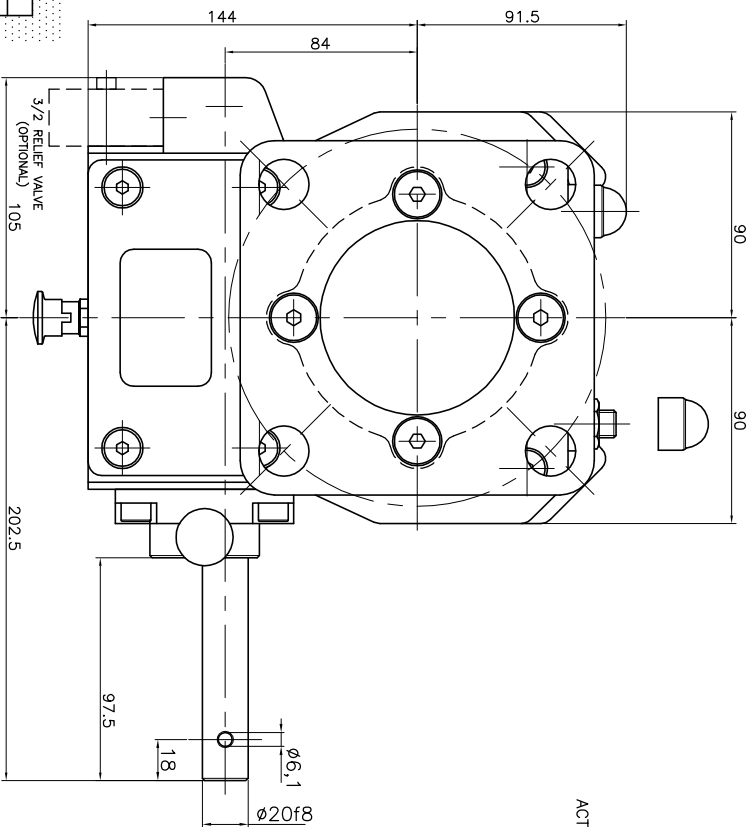


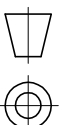
GEARBOX TYPE: 1600-MO-D



No rights can be obtained from this drawing
Drawing can be changed without notice

| TECHNICAL DATA | |
|---------------------|--|
| NAME | : 1600 MO-D |
| Travel | : 90° ±5° at both ends |
| RATIO | : 42 : 1 (quarter turn) |
| TURNS TO CLOSE | : 10.5 |
| APPROX. WEIGHT | : 20.10 kg. (44.31lb.) |
| MAX. INPUT TORQUE | : 125Nm (92.20 lbf.ft.) |
| MAX. OUTPUT TORQUE | : 1600 Nm (1180.10 lbf. ft.) |
| MECH. ADV. | : 12.8% (+/- 10%) (Values measured by fully loaded gearbox) |
| MOUNTING DETAILS | |
| VALVE CONNECTION | MIN. : $\phi 125$ [4.92] 4x M12 (F12) MAX. : $\phi 140$ [5.51] 4x M16 (F14) |
| BORE | MIN. : ϕ (pilot-bore) or [] MAX. : $\phi 65$ [2.55] or [140] [1.57] |
| ACTUATOR CONNECTION | MIN. : $\phi 125$ [4.92] 4x $\phi 14$ (F12) MAX. : $\phi 165$ [6.49] 4x M20 (F16) |
| SHAFT DIMENSIONS | MIN. : ϕ (pilot-bore) or [] MAX. : $\phi 65$ [2.55] or [160] [2.36] |

Pro-Gear



dimension in MM.

Scale : none

Drawing number :

DC-1600-MO-D-01

Revision :

03

This document is property of PRO-GEAR GmbH. Neither this or its content may be copied or used in any other way detrimental to the interest of PRO-GEAR, acceptance of this document shall constitute acknowledgement of the foregoing conditions