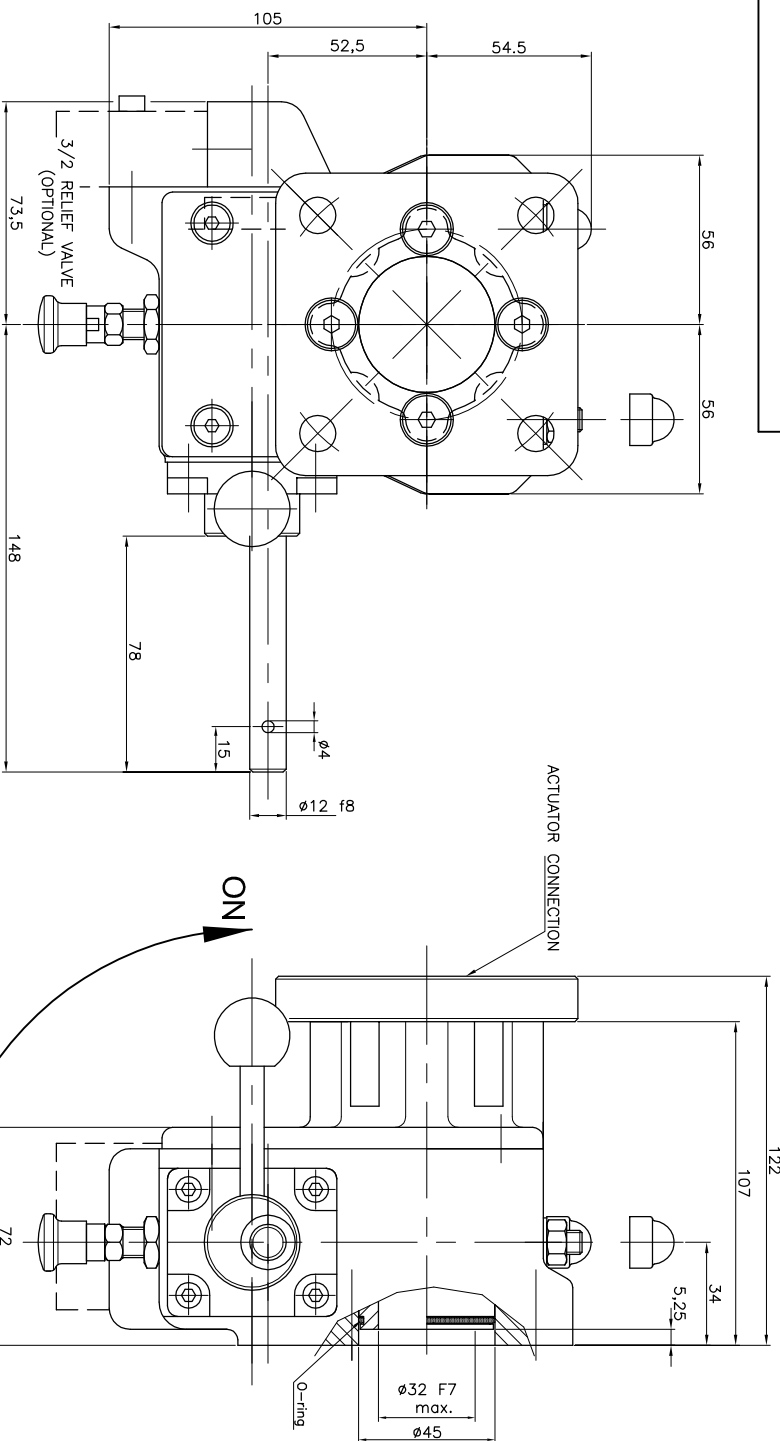


GEARBOX TYPE: 350 MO-D



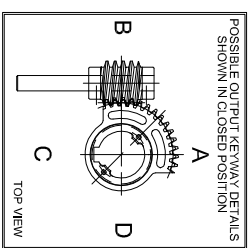
TECHNICAL DATA

NAME	: 350 MO-D
Travel	: 90° ±5° at both ends
RATIO	: 44 : 1 (quarter turn)
TURNS TO CLOSE	: 11
APPROX. WEIGHT	: 6.05 kg. (13.34lb.)
	excl. bore, coupling and handwheel
MAX. INPUT TORQUE	: 31.25Nm (23.05 lbf.ft.)
MAX. OUTPUT TORQUE	: 350 Nm (295.02lbf. ft.)
MECH. ADV.	: 11.2% (+/- 10%)
	(Values measured by fully loaded gearbox)

MOUNTING DETAILS

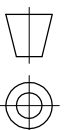
VALVE CONNECTION	MIN.	: ø70 [2.75] 4x M8 (F07)
	MAX.	: ø102 [4.01] 4x M10 (F10)
BORE	MIN.	: ø8.4 (pilot-bore) or [ø8.0 [0.31]]
	MAX.	: ø32 [1.26] or [ø22 [0.79]]

ACTUATOR CONNECTION	MIN.	: ø70 [2.75] 4x M8 (F07)
	MAX.	: ø125 [4.92] 4x ø13 (F12)
BORE	MIN.	: ø [] or []
	MAX.	: ø43 [1.69] or [ø30 [1.18]]



No rights can be obtained from this drawing
Drawing can be changed without notice

Pro-Gear



dimension in MM.

Scale : none

Drawing number :

DC-350-MO-D-01

Revision :

04

This document is property of PRO-GEAR GmbH. Neither this or its content may be copied or used in any other way detrimental to the interest of PRO-GEAR, acceptance of this document shall constitute acknowledgment of the foregoing conditions