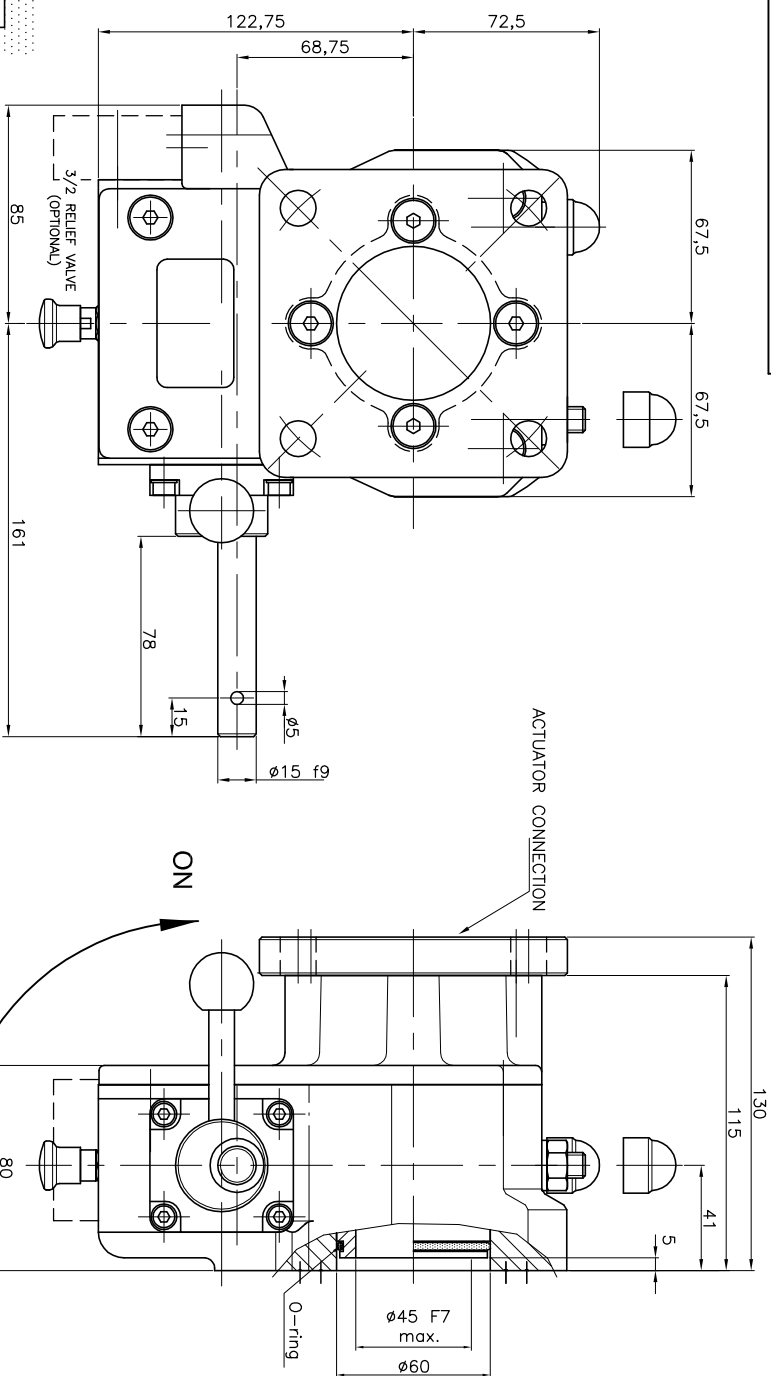


# GEARBOX TYPE: 700-MO-D



## TECHNICAL DATA

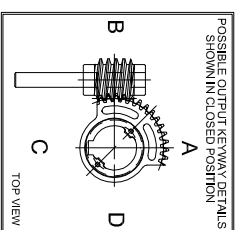
NAME	: 700 MO-D
Travel	: 90° ±5° at both ends
RATIO	: 52 : 1 (quarter turn)
TURNS TO CLOSE	: 13
APPROX. WEIGHT	: 9,80 Kg. (21,61lb.) excl. bore, coupling and handwheel
MAX. INPUT TORQUE	: 50Nm (36,88 lbf.ft.)
MAX. OUTPUT TORQUE	: 700 Nm (516,29 lbf. ft.)
MECH. ADV.	: 14 (+/- 10%) (Values measured by fully loaded gearbox)

## MOUNTING DETAILS

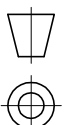
VALVE CONNECTION	MIN. : $\phi 70$ [2,75] 4x M8 (F07) MAX. : $\phi 125$ [4,92] 4x M12 (F12)
BORE	MIN. : $\phi$ (pilot-bore) or [1,--] [--] MAX. : $\phi 45$ [1,77] or [27] [1,06]
ACTUATOR CONNECTION	MIN. : $\phi 102$ [4,01] 4x $\phi 12$ (F10) MAX. : $\phi 140$ [5,51] 4x $\phi 18$ (F14)

SHAFT DIMENSIONS	MIN. : $\phi$ (pilot-bore) or [1,--] [--] MAX. : $\phi 58$ [2,28] or [40] [1,57]
------------------	---

No rights can be obtained from this drawing  
Drawing can be changed without notice



# Pro-Gear



dimension in MM.

Scale : none

Drawing number :

DC-700-MO-D-01

Revision :

02

This document is property of PRO-GEAR GmbH. Neither this or its content may be copied or used in any other way detrimental to the interest of PRO-GEAR, acceptance of this document shall constitute acknowledgment of the foregoing conditions