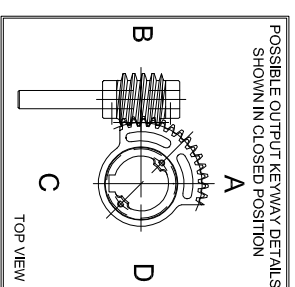
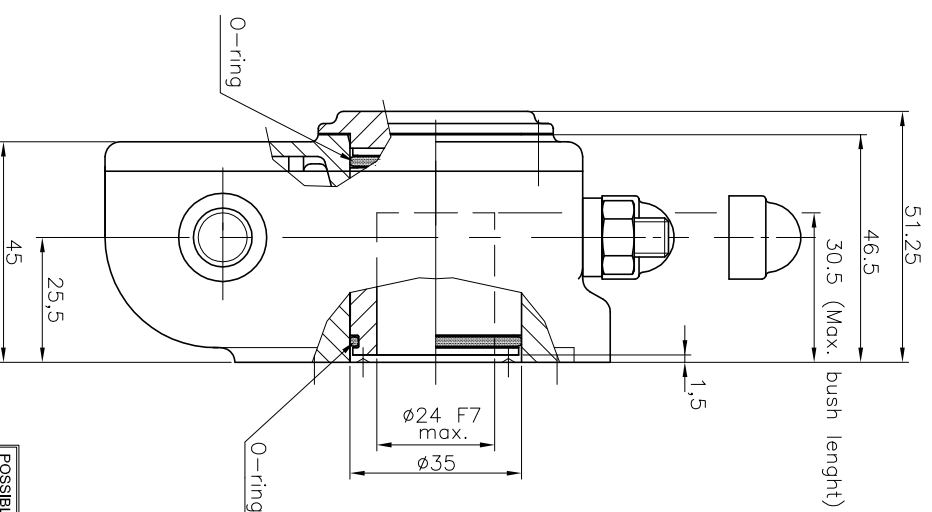
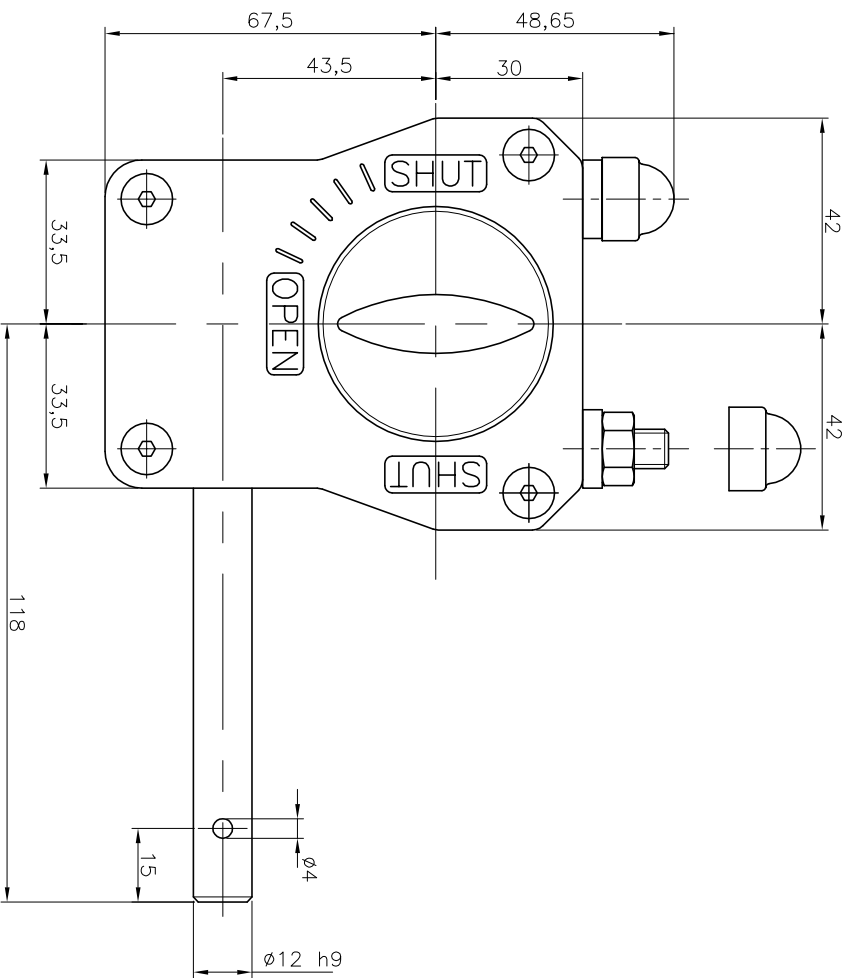


GEARBOX TYPE: X-21



No rights can be obtained from this drawing
Drawing can be changed without notice

TECHNICAL DATA	
NAME	: X-21
Trovel	: $\pm 5^\circ$ at both ends
RATIO	: 40 : 1 (quarter turn)
TURNS TO CLOSE	: 10
APPROX. WEIGHT	: 1 kg. (2.20lb.) excl. bore and handwheel
MAX. INPUT TORQUE	: 19.7 Nm (14.53 lbf.ft.)
MAX. OUTPUT TORQUE	: 200 Nm (147.51lbf. ft.)
MECH. ADV.	: 10.2% (+/- 10%)
MOUNTING DETAILS	
BOLT CIRCLE	MIN. : $\varnothing 50$ [1.97] 4x M6 (F05) MAX. : $\varnothing 70$ [2.75] 4x M8 (F07)
BORE	MIN. : $\varnothing 8.4$ (pilot-bore) or [8.0 [0.31]] MAX. : $\varnothing 24$ [0.94] or [14 [0.55]]

Pro-Gear



dimension in MM.

Scale : none

Drawing number :

DC-X21-01

Revision :

02

This document is property of PRO-GEAR GmbH. Neither this or its content may be copied or used in any other way detrimental to the interest of PRO-GEAR, acceptance of this document shall constitute acknowledgement of the foregoing conditions