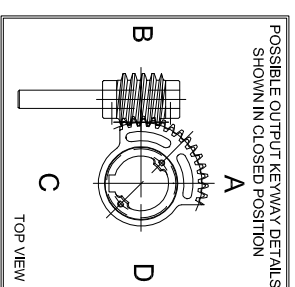
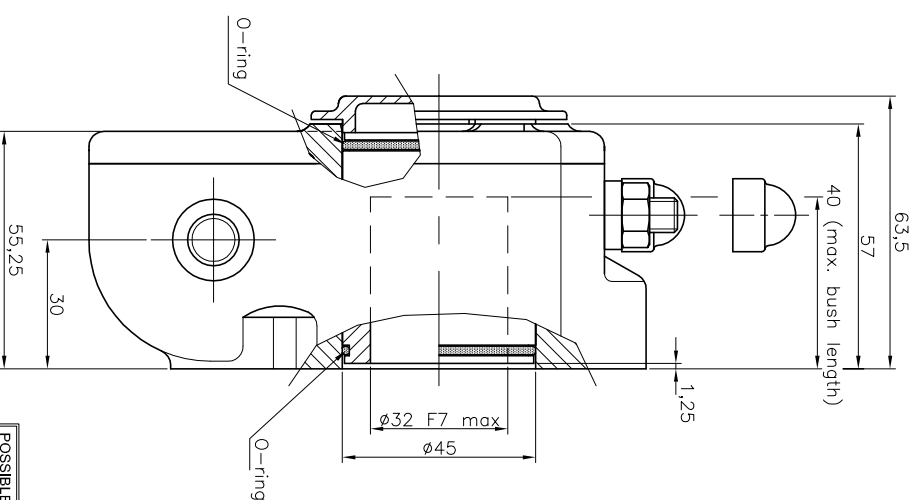
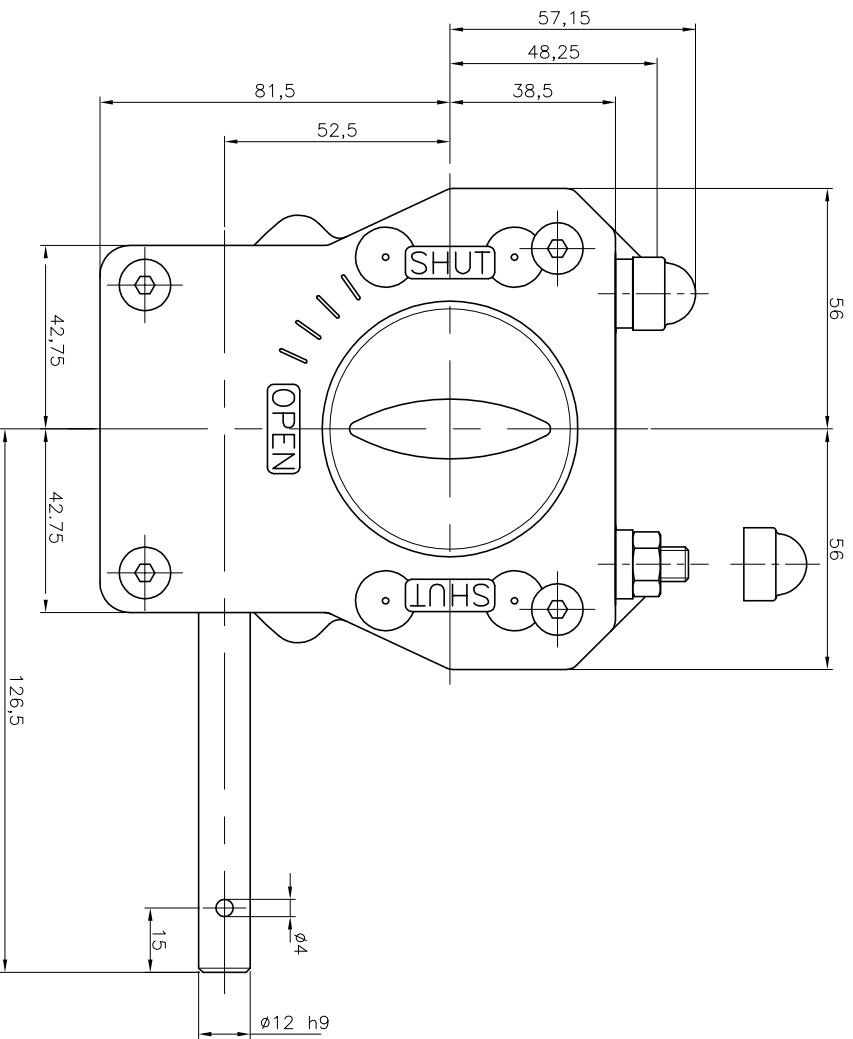


GEARBOX TYPE: X-41



No rights can be obtained from this drawing
Drawing can be changed without notice

TECHNICAL DATA	
NAME	: X-41
Trawl	: 90° ±5° at both ends
RATIO	: 44 : 1 (quarter turn)
TURNS TO CLOSE	: 11
APPROX. WEIGHT	: 1,65 kg. (3,64 lb.) excl. bore and handwheel
MAX. INPUT TORQUE	: 35,7 Nm (26,33 lbf.ft.)
MAX. OUTPUT TORQUE	: 400 Nm (295,02 lbf. ft.)
MECH. ADV.	: 11,2% (+/- 10%) (Value measured by fully loaded gearbox)
MOUNTING DETAILS	
BOLT CIRCLE	MIN. : $\phi 70$ [2,75] 4x M8 (F07) MAX. : $\phi 102$ [4,01] 4x M10 (F10)
BORE	MIN. : $\phi 8,4$ (pilot-bore) or [8,0 [0,31]] MAX. : $\phi 32$ [1,26] or [22 [0,79]]

Pro-Gear



dimension in MM.

Scale : none

Drawing number :

DC-X41-01

Revision :

05

This document is property of PRO-GEAR GmbH. Neither this or its content may be copied or used in any other way detrimental to the interest of PRO-GEAR, acceptance of this document shall constitute acknowledgement of the foregoing conditions