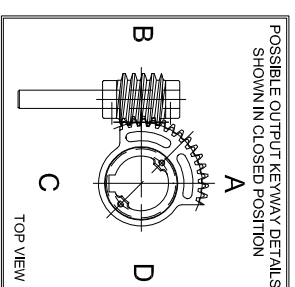
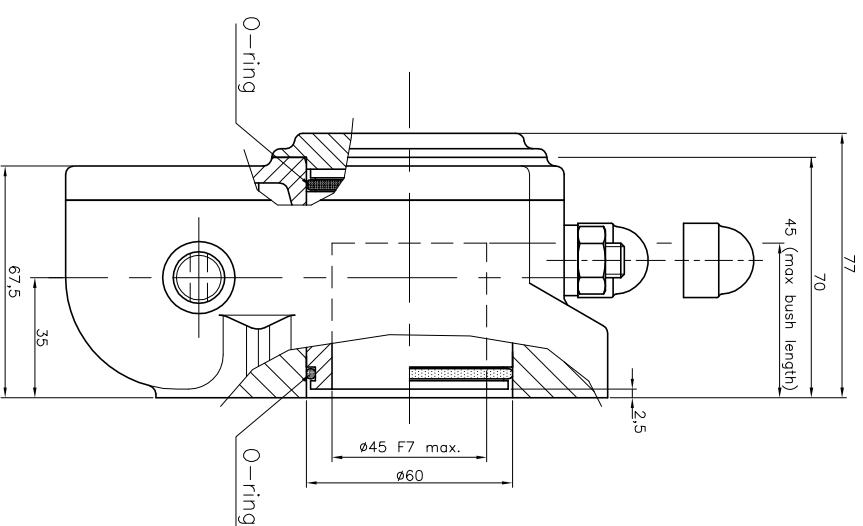
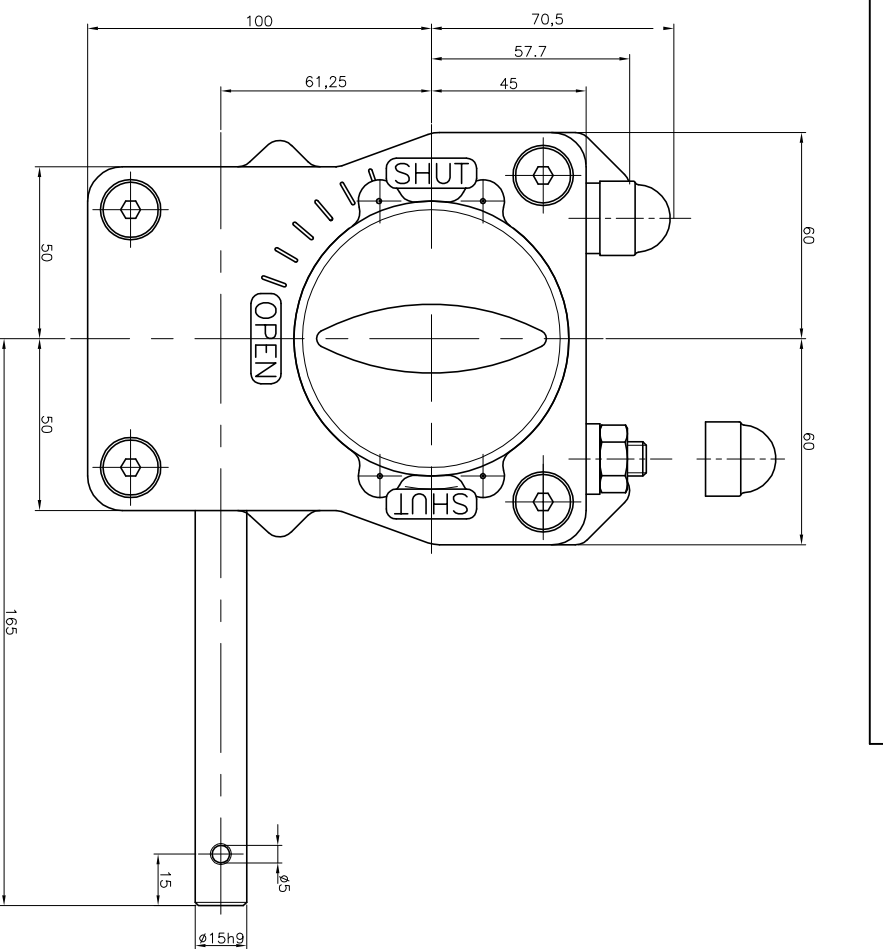


GEARBOX TYPE: X-61



No rights can be obtained from this drawing
Drawing can be changed without notice

TECHNICAL DATA	
NAME	: X-61
Travel	: 90° ±5° at both ends
RATIO	: 34 : 1 (quarter turn)
TURNS TO CLOSE	: 8,5
APPROX. WEIGHT	: 2,6 kg. (5,73 lb.) excl. bore and handwheel
MAX. INPUT TORQUE	: 51,3 Nm (37,84 lbf.ft.)
MAX. OUTPUT TORQUE	: 600 Nm (442,54 lbf. ft.)
MECH. ADV.	: 11,7% (+/- 10%) (Value measured by fully loaded gearbox)
MOUNTING DETAILS	
BOLT CIRCLE	MIN. : $\varnothing 102$ [4.01] 4x M10 (F10) MAX. : $\varnothing 125$ [4.92] 4x M12 (F12)
BORE	MIN. : $\varnothing 8,4$ (pilot-bore) or [8.0 [0.31]] MAX. : $\varnothing 45$ [1.77] or [27 [1.06]]

Pro-Gear



dimension in MM.
Scale : none

Drawing number :
DC-X61-01

Revision :
02

This document is property of PRO-GEAR GmbH. Neither this or its content may be copied or used in any other way detrimental to the interest of PRO-GEAR, acceptance of this document shall constitute acknowledgement of the foregoing conditions