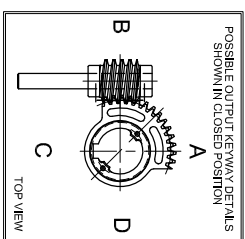
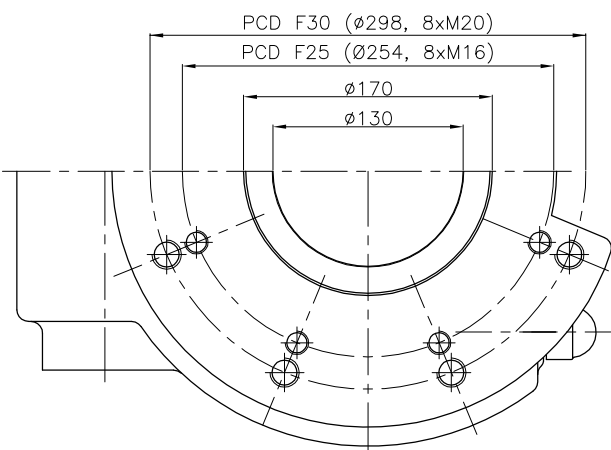
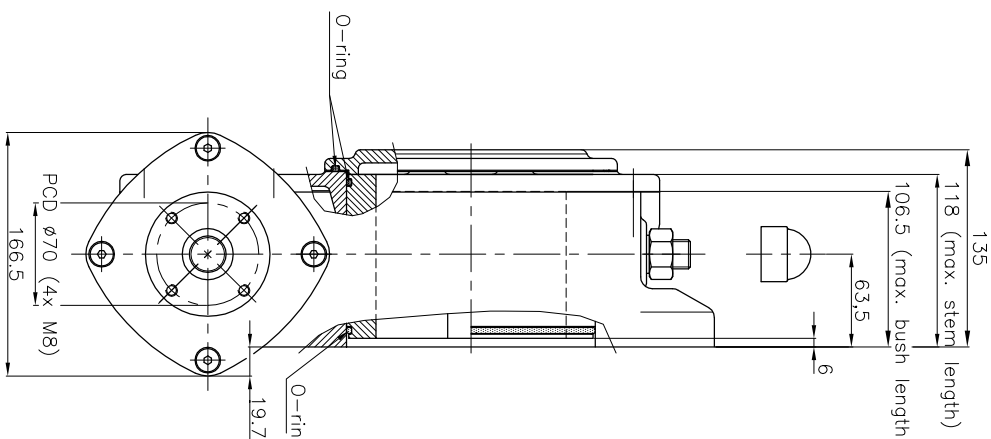
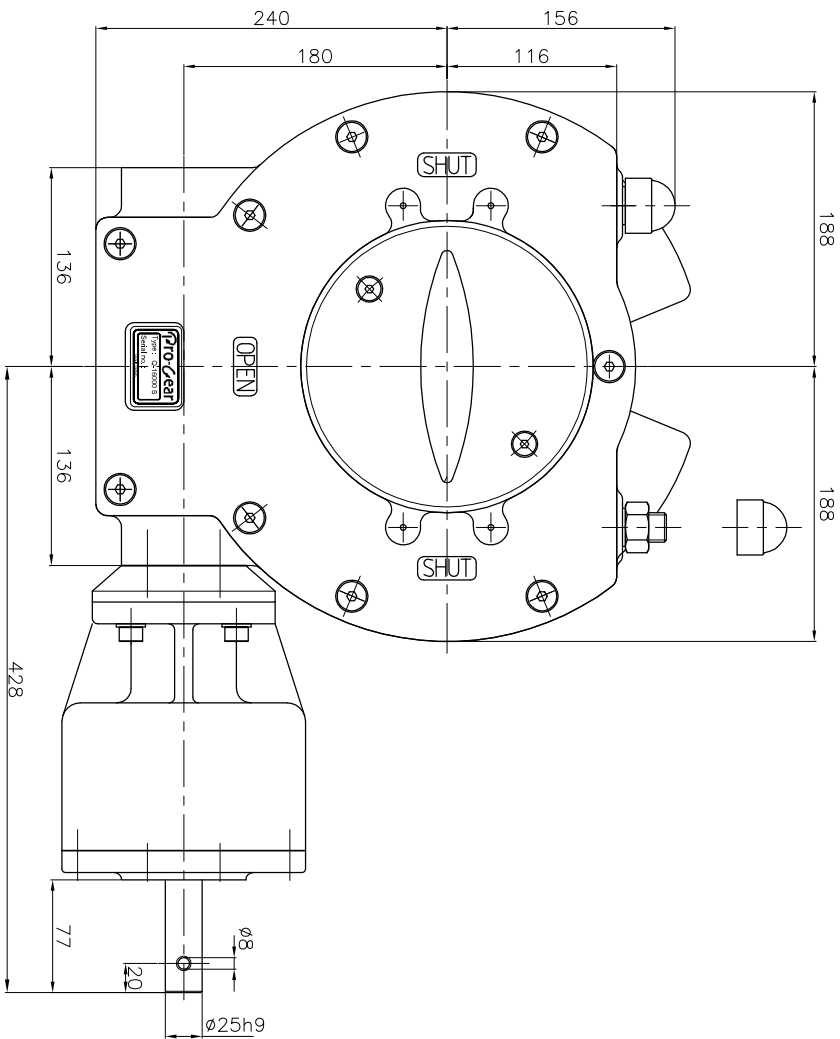


GEARBOX TYPE: Q 16000-S



No rights can be obtained from this drawing
Drawing can be changed without notice

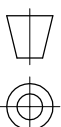
TECHNICAL DATA

NAME	: Q-16000-S
Travel	: 90° ±5° at both ends
RATIO	: 648 : 1 (quarter turn)
TURNS TO CLOSE	: 162
APPROX. WEIGHT	: 62.50 kg: (137.79 lb.) excl. bore and handwheel
MAX. INPUT TORQUE	: 120Nm (88.5 lbf.ft.)
MAX. OUTPUT TORQUE	: 16000 Nm (11801.0 lbf. ft.)
MECH. ADV.	: 133.3% (+/- 10%)

MOUNTING DETAILS

BOLT CIRCLE	MIN. : ø254 [10.0] 8x M16 (F35)	MAX. : ø298 [11.7] 8x M20 (F30)
BORE	MIN. : --	MAX. : ø130 [5.12"] or [90 [3.54"]]

Pro-Gear



dimension in MM.

Scale : none

Drawing number : DC-16000-S-01

Revision : 01

This document is property of PRO-GEAR GmbH. Neither this or its content may be copied or used in any other way detrimental to the interest of PRO-GEAR, acceptance of this document shall constitute acknowledgement of the foregoing conditions