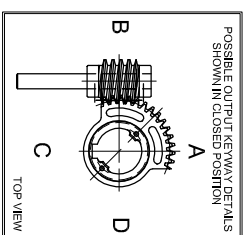
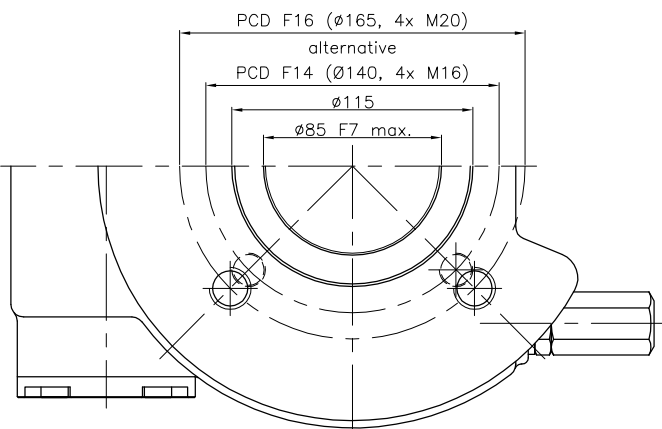
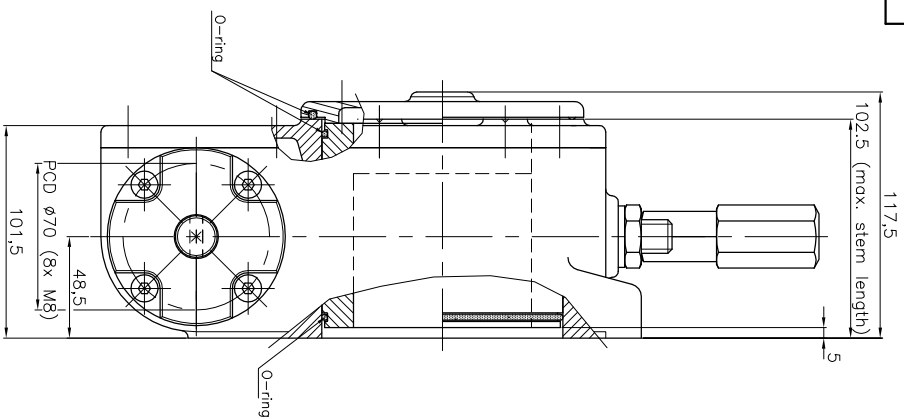
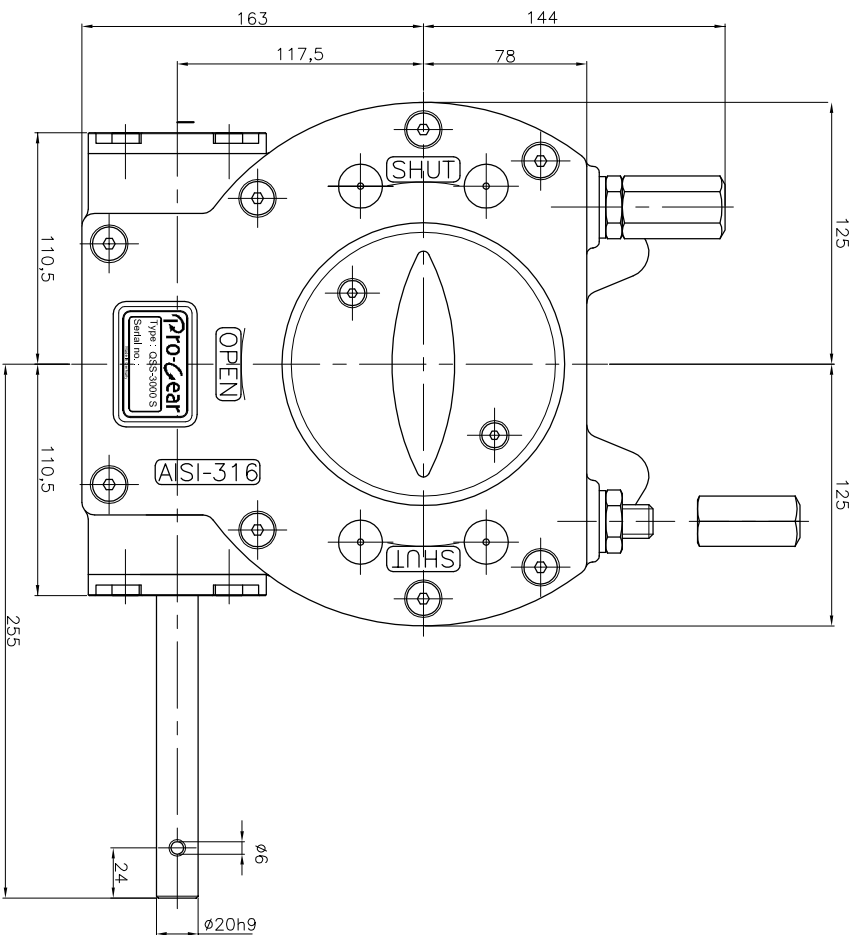


GEARBOX TYPE: QSS 3000-S



No rights can be obtained from this drawing
Drawing can be changed without notice

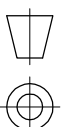
TECHNICAL DATA

NAME	: QSS-3000 S
Travel	: 90° ±5° at both ends
RATIO	: 62 : 1 (quarter turn)
TURNS TO CLOSE	: 15.5
APPROX. WEIGHT	: 23.25 kg. (51.26lb.)
MAX. INPUT TORQUE	: 167Nm (123.17lbf.ft.) excl. bore and handwheel
MAX. OUTPUT TORQUE	: 3000 Nm (2212.7 lbf. ft.)
MECH. ADV.	: 17.9% (+/- 10%) (values measured by fully loaded gearbox)

MOUNTING DETAILS

BOLT CIRCLE	MIN. : $\phi 140$ [5.5"] 4x M16 (F14)	MAX. : $\phi 165$ [6.50"] 4x M20 (F16)
BORE	MIN. : $\phi 30$ [1.18"] pilot bore	MAX. : $\phi 85$ [3.35"] or [3.5"]

Pro-Gear



dimension in MM.

Scale : none

Drawing number : DC-QSS-3000-S-01

Revision : 00

This document is property of PRO-GEAR GmbH. Neither this or its content may be copied or used in any other way detrimental to the interest of PRO-GEAR, acceptance of this document shall constitute acknowledgement of the foregoing conditions