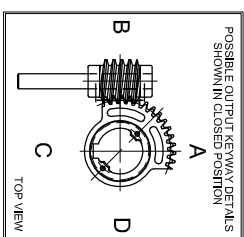
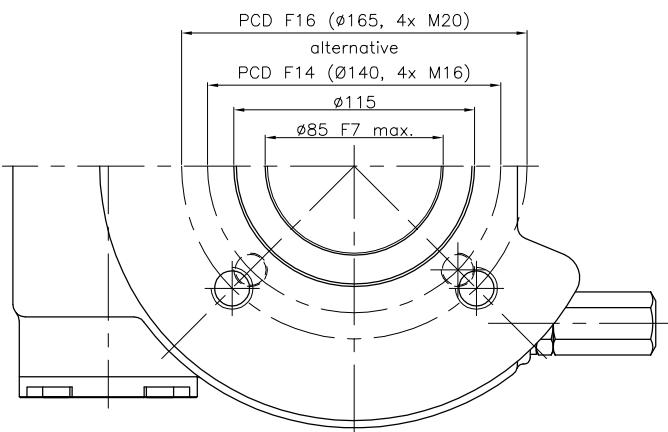
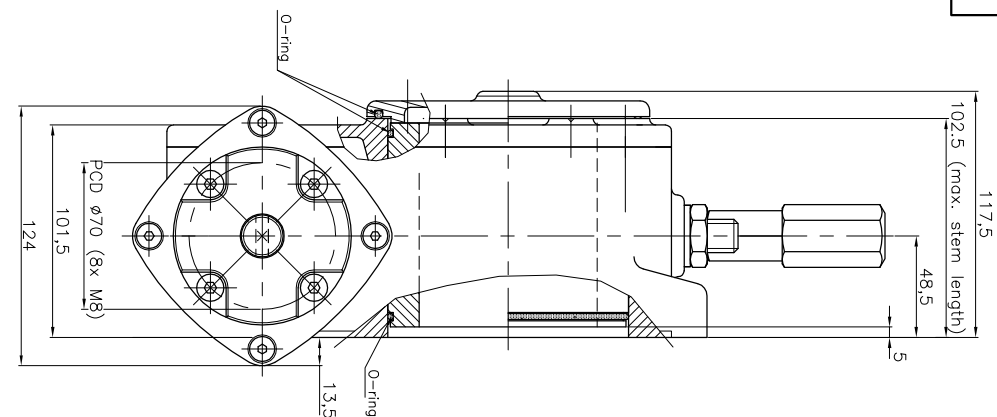
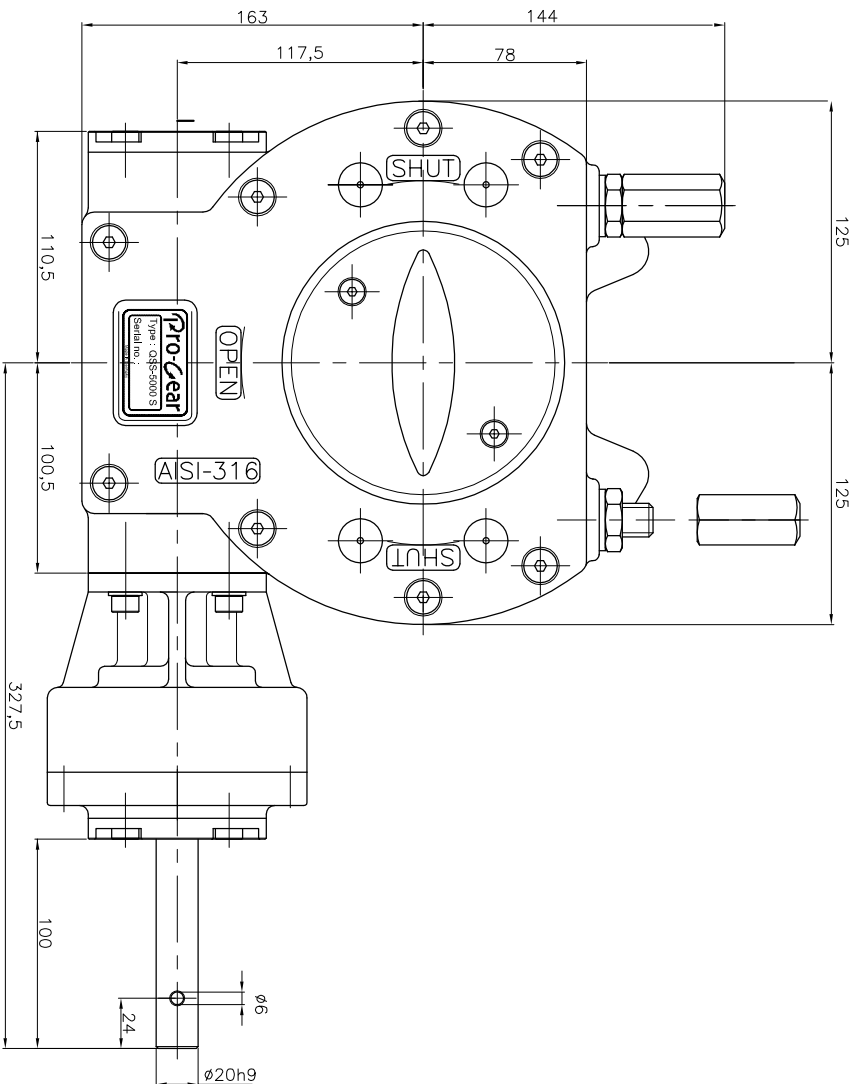


GEARBOX TYPE: QSS 5000-S



No rights can be obtained from this drawing
Drawing can be changed without notice

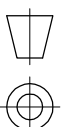
TECHNICAL DATA

NAME	: QSS-5000 S
Travel	: 90° ±5° at both ends
RATIO	: 230 : 1 (quarter turn)
TURNS TO CLOSE	: 57.5
APPROX. WEIGHT	: 29.75 kg. (65.59lb.) excl. bore and handwheel
MAX. INPUT TORQUE	: 85Nm (62.69 lbf.ft.)
MAX. OUTPUT TORQUE	: 5000 Nm (3687.8 lbf. ft.)
MECH. ADV.	: 58.8% (+/- 10%) (values measured by fully loaded gearbox)

MOUNTING DETAILS

BOLT CIRCLE	MIN. : Ø140 [5.5"] 4x M16 (F14)	MAX. : Ø165 [6.50"] 4x M20 (F16)
BORE	MIN. : Ø30 [1.18"] pilot bore	MAX. : Ø85 [3.35"] or [55 [2.16"]]

Pro-Gear



dimension in MM.

Scale : none

Drawing number : DC-QSS-5000-S-01

Revision : 00

This document is property of PRO-GEAR GmbH. Neither this or its content may be copied or used in any other way detrimental to the interest of PRO-GEAR, acceptance of this document shall constitute acknowledgement of the foregoing conditions