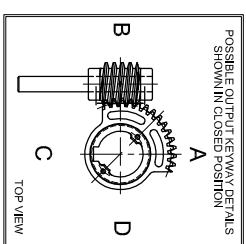
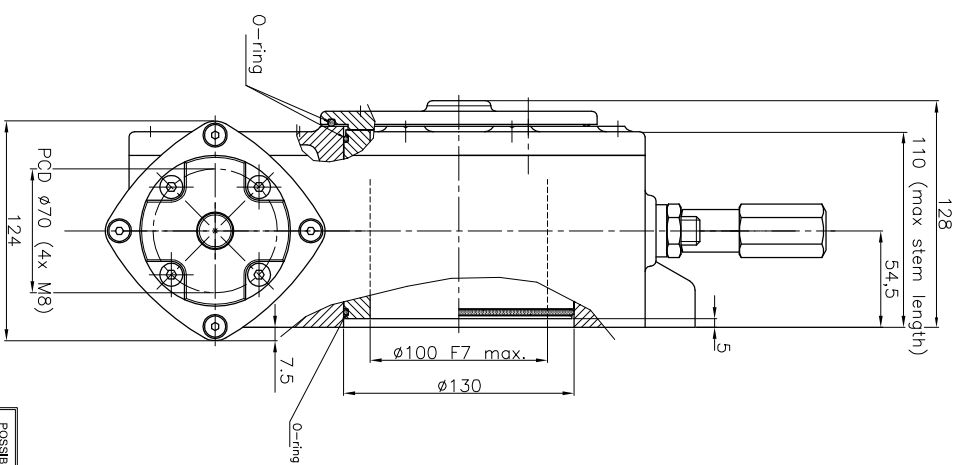
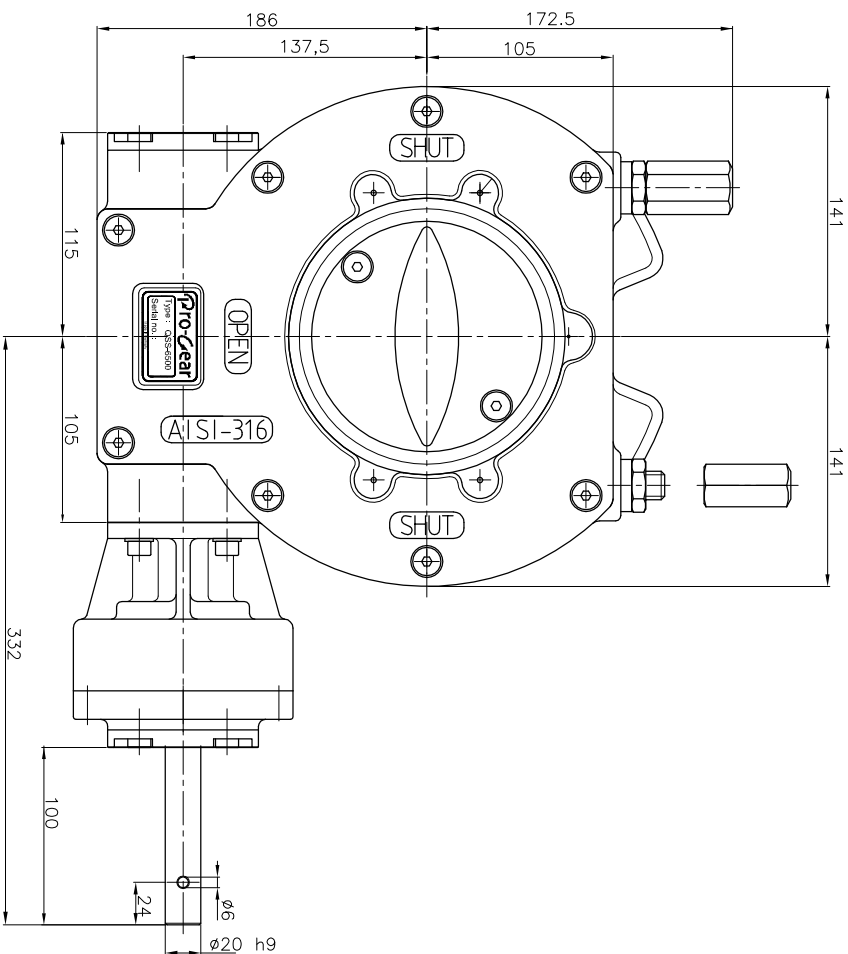


# GEARBOX TYPE: QSS-6500-S



No rights can be obtained from this drawing  
Drawing can be changed without notice

## TECHNICAL DATA

NAME	: QSS-6500-S
Travel	: 90° ±5° at both ends
RATIO	: 267 : 1 (quarter turn)
TURNS TO CLOSE	: 67
APPROX. WEIGHT	: 37,5 kg. ( 82,67lb.) excl. bore and handwheel
MAX. INPUT TORQUE	: 95Nm (70.06 lbf.ft.)
MAX. OUTPUT TORQUE	: 6500 Nm (4794.2 lbf. ft.)
MECH. ADV.	: 68,4% (+/- 10%) (Values measured by fully loaded gearbox)

## MOUNTING DETAILS

BOLT CIRCLE	MIN. : $\phi 165$ [6.50] 4x M20 (F16)
	MAX. : $\phi 254$ [10.0] 8x M16 (F25)
BORE	MIN. : $\phi 30$ [ 1.18] (pilot bore)
	MAX. : $\phi 100$ [3.94"] or [165 [2.56"]]

# Pro-Gear



dimension in MM.

Scale : none

Drawing number :

DC-QSS-6500-S-01

Revision :

02

This document is property of PRO-GEAR GmbH. Neither this or its content may be copied or used in any other way detrimental to the interest of PRO-GEAR, acceptance of this document shall constitute acknowledgement of the foregoing conditions